

SWSLHD
Clinical Stream Development Priorities
Paediatrics and Neonatology Clinical
Stream
2018 – 2020

Leading care, healthier communities



Health
South Western Sydney
Local Health District

Table of Contents

Overview of Paediatrics and Neonatology Clinical Stream in SWSLHD.....	2
Service Map Key	3
Service Map – Paediatrics and Neonatology Clinical Stream – Current.....	4
SWSLHD Strategic Directions	7
Priority Developments for Paediatrics and Neonatology Clinical Stream 2018 - 2020.....	7
Service Map – Paediatrics and Neonatology Clinical Stream – Future (2026)	8

Overview of Paediatrics and Neonatology Clinical Stream in SWSLHD

Inpatient Paediatric Units

SWSLHD has five inpatient paediatric units located at Bankstown-Lidcombe, Liverpool, Fairfield, Campbelltown and Bowral and Districts Hospitals.

Neonatal Intensive Care Unit

SWSLHD has one neonatal intensive care unit located at Liverpool Hospital, to care for high risk neonates. These neonatal intensive care beds are a supra LHD service and are subject to planning by the Ministry of Health. A flexible Model of Care involving up surge of SCN bed enables local care of sick or premature babies requiring resources to be appropriately utilised with timely transfer/back-transfer of neonates no longer requiring higher levels of care.

Special Care Nurseries (SCN)

SCN beds in SWSLHD provide levels 1-4 care for neonates requiring investigations, monitoring and management of neonatal conditions. Special Care Nursery cots are located at Bankstown-Lidcombe, Liverpool, Campbelltown, Fairfield and Bowral & District Hospitals. These special care cots also serve as step down cots for the NICU.

Ambulatory Care Services

There are four Ambulatory Care Services that are available within the District including Campbelltown Paediatric Ambulatory Care Service, Fairfield Paediatric Ambulatory Care Service, Liverpool Paediatric Ambulatory Care Service and the Liverpool Newborn Family Support Program. Paediatric Hospital in the Home (HITH) was established at Liverpool in May 2017.

These ambulatory care services bridge the care between the hospital and community/ home environment by facilitating early discharge by providing care or support in the home. In addition, ambulatory care at Campbelltown and Fairfield Hospitals can accommodate short stay care of paediatric patients that are admitted through the ED or by direct referral from a GP requiring short admission for treatment of minor health conditions, avoiding EDs and minimising hospital inpatient admissions.

Outpatient Clinics

General Paediatric medical outpatient clinics are conducted at all facilities across the District and provide a source of referral to follow up on any hospital or ambulatory care admissions that require further medical attention. Appointments at these clinics are made on discharge from either the inpatient or ambulatory care services.

Subspecialty Clinics

Subspecialty clinics are conducted in conjunction with specialists from the SCHN at both Campbelltown and Liverpool Hospitals. They operate under a variety of governance structures and cater for conditions including endocrinology, diabetes, respiratory, cardiology, immunology, obesity, ophthalmology, neurology, genetics, surgical, burns and renal conditions. Expansion of these clinics will further bring the care for children within the District closer to their place of residence.

General Paediatric Surgery

Paediatric surgical operations are performed by general surgeons or by subspecialty surgeons across the District at Bankstown, Fairfield, Liverpool, Campbelltown and Bowral Hospitals, with paediatric elective surgery lists for the District conducted at Liverpool and Campbelltown Hospitals. All complex cases are managed at SCHN. In addition, a paediatric surgeon provides consultation services to both the neonatal intensive care unit and the foetal maternal unit.

The status quo projections suggest the prime strategic imperative in paediatric surgery is to address the high flows to the Children’s Hospitals, examining the feasibility of undertaking locally more of the surgical and procedural activity that does not require the specialised paediatric services only available at the Children’s Hospitals.

In the NSW Election Commitments 2015-19 (2014) there was commitment to ‘Recruit five additional paediatric general surgeons for Sydney Children’s Hospital Network as part of a hub and spoke model’. One of these positions has been recruited (June 2018) to Campbelltown to enable additional planned surgery in SWSLHD.

Paediatric Services provided by Community Health

SWSLHD also provide a large number of other paediatric services within Community Health including child developmental assessment services, refugee clinics, children out of the home clinic, Youth Health Services, Branches clinic, child protection service and early childhood services.

Allied Health Services







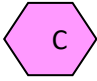
There are limited amount of dedicated Allied Health Services available for children. Services are provided by Allied Health personnel within the general role in the hospitals.

Allied Health services are provided for inpatients at all hospitals. Liverpool and Campbelltown Hospitals provide the full range of therapy services whilst the other hospitals predominantly provide Social Work and Physiotherapy services. Non admitted patient care is provided within all community health centres and hospital outpatient units. However, Campbelltown and Liverpool Hospitals are the only hospital units able to provide Occupational Therapy, Speech Pathology and Physiotherapy services to children with complex needs.

Research

Child Health Academic Unit is being established to enable knowledge translation and to coordinate research activities in SWSLHD.

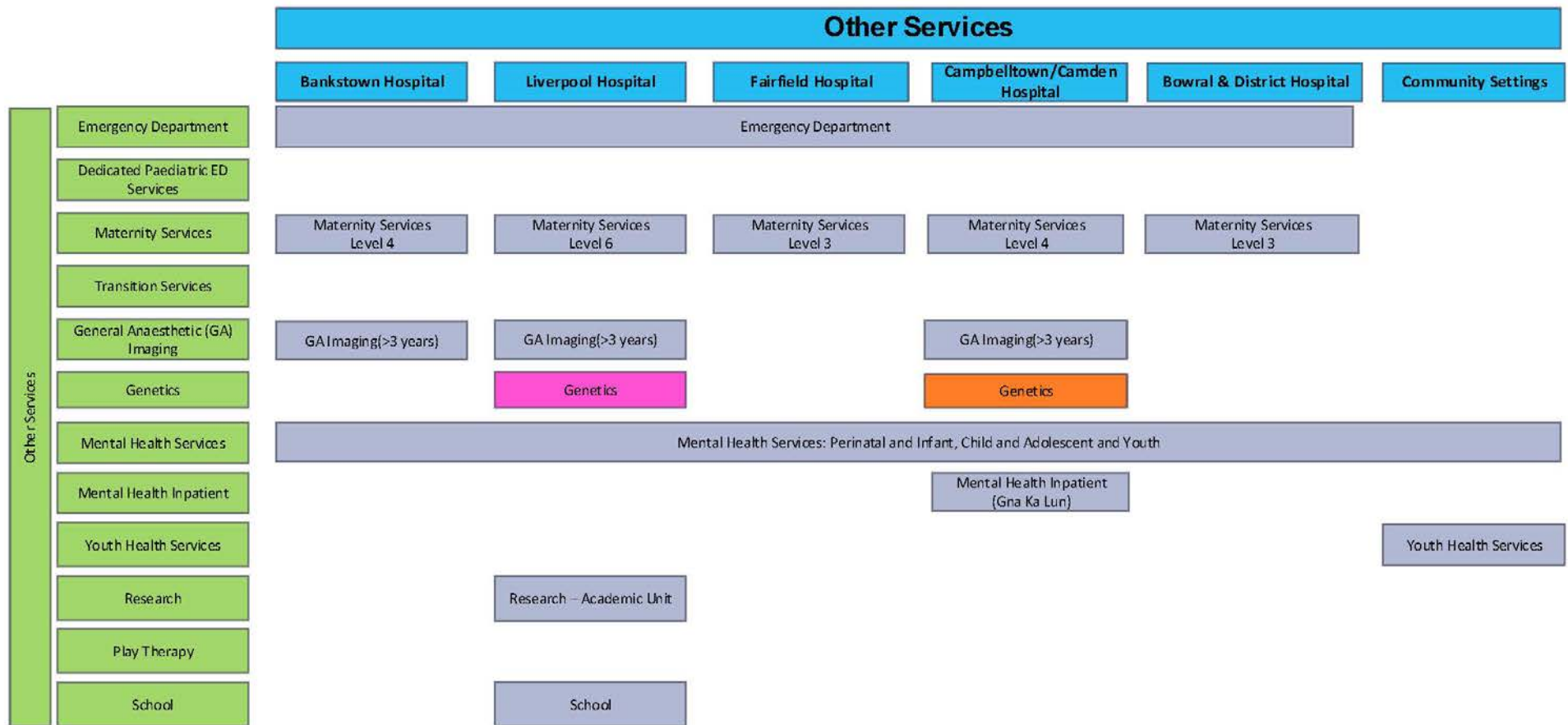
Service Map Key

Key	Description
	Developing service
	Partial service
	State-wide service provision
	Lead service or Centre of Excellence
	Networked service i.e. linked to “lead” service
	Single service which provides services across the LHD
	Hub and Spoke clinic provided

Service Map – Paediatrics and Neonatology Clinical Stream – Current

		Paediatrics and Neonatology					
		Bankstown Hospital	Liverpool Hospital	Fairfield Hospital	Campbelltown/Camden Hospital	Bowral & District Hospital	Community Settings
Newborn in Care	Neonatal Intensive Care		Neonatal ICU Level 5				
	Special Care Nursery	Special Care Nursery Level 3	Special Care Nursery Level 4	Special Care Nursery Level 3	Special Care Nursery Level 3	Special Care Nursery Level 1	
Paediatric Inpatient Services	Paediatric Inpatient Unit	Paediatric Inpatient Unit Level 4	Paediatric Inpatient Unit Level 4	Paediatric Inpatient Unit Level 4	Paediatric Inpatient Unit Level 5	Paediatric Inpatient Unit Level 3	
	Adolescent Inpatients				Adolescent Inpatients		
	Paediatric Close Observation Unit						
	Eating Disorders Inpatients						
	Diabetes Inpatients				Diabetes Inpatients		
	Paediatric Elective General Surgery		Paediatric Elective General Surgery (>3 years)		Paediatric Elective General Surgery (>3 years)		
Paediatric Surgical Services	Paediatric Emergency General Surgery	Paediatric Emergency General Surgery – guided by facility policy					
	Paediatric Elective Specialty Surgery	Paediatric Elective Specialty Surgery (>3 years)	Paediatric Elective Specialty Surgery (>3 years)	Paediatric Elective Specialty Surgery (>3 years)	Paediatric Elective Specialty Surgery (>3 years)	Paediatric Elective Specialty Surgery (>3 years)	
	Paediatric Emergency Specialty Surgery	Paediatric Emergency Specialty Surgery – guided by facility policy					
	General Paediatric Outpatient Clinics	General Paediatric Outpatient Clinics	General Paediatric Outpatient Clinics	General Paediatric Outpatient Clinics	General Paediatric Outpatient Clinics	General Paediatric Outpatient Clinics	General Paediatric Outpatient Clinics
Paediatric Outpatient Clinics	Paediatric General Surgery Outpatient Clinics		Paediatric General Surgery Outpatient Clinics		Paediatric General Surgery Outpatient Clinics		
	Diabetes and Endocrinology Outpatient Clinics		Diabetes and Endocrinology Outpatient Clinics		Diabetes and Endocrinology Outpatient Clinics		
	Neurology Outpatient Clinics		Neurology Outpatient Clinics		Neurology Outpatient Clinics		
	Immunology Outpatient Clinics				Immunology Outpatient Clinics		
	Renal Outpatient Clinics				Renal Outpatient Clinics		
	Rheumatology Outpatient Clinics		Rheumatology Outpatient Clinics				
	Dermatology Outpatient Clinics		Dermatology Access to Consult				
	Gastroenterology Outpatient Clinics						
	Cardiology Outpatient Clinics						
	Respiratory Outpatient Clinics						
	Weight Management						
							Healthy Weight Services

Paediatrics and Neonatology		Bankstown Hospital	Liverpool Hospital	Fairfield Hospital	Campbelltown/Camden Hospital	Bowral & District Hospital	Community Settings	
Paediatric Ambulatory Care Services	Paediatric Hospital in the Home (HITH)		Paediatric HITH	Paediatric HITH	Paediatric HITH			
	Paediatric Short Stay Unit	Paediatric SSU	Paediatric SSU		Paediatric SSU			
	Paediatric Acute Review Clinics		Paediatric Acute Review Clinic					
	Paediatric Ambulatory Care Outreach		Paediatric Ambulatory Care Outreach	Paediatric Ambulatory Care Outreach	Paediatric Ambulatory Care Outreach			
	Paediatric Sleep Unit							
Community Paediatrics Services	Developmental Assessment	Developmental Assessment – adjacent to or on hospital campus						
	Child Protection	Child Protection Acute Services						★
	Vulnerable Children's Clinics	Vulnerable Children's Clinics						★
Paediatric Allied Health	Speech Pathology	Type and breadth of services depends on site. Some sites have dedicated paediatric allied health and other sites provide services within the general role.						
	Social Work	Type and breadth of services depends on site. Some sites have dedicated paediatric allied health and other sites provide services within the general role.						
	Physiotherapy	Type and breadth of services depends on site. Some sites have dedicated paediatric allied health and other sites provide services within the general role.						
	Occupational Therapy	Type and breadth of services depends on site. Some sites have dedicated paediatric allied health and other sites provide services within the general role.						
	Dietetics	Type and breadth of services depends on site. Some sites have dedicated paediatric allied health and other sites provide services within the general role.						
	Feeding Clinics		Feeding Clinics		Feeding Clinics			



SWSLHD Strategic Directions

	Safe, Quality Care		A Healthy Community
<ul style="list-style-type: none"> • Consistently safe • Outstanding quality • Appropriate, timely care • Evidence based and patient-centred care • Cultural safety • Accountability and governance 		<ul style="list-style-type: none"> • Healthy people and communities • Safe, healthy environments • Knowing the needs of the community • Prevention and early intervention 	
	Collaborative Partnerships		A Healthcare System for the Future
<ul style="list-style-type: none"> • Consumer, patient and carer involvement • Genuine engagement and communication • Strategic partnerships • Funding opportunities 		<ul style="list-style-type: none"> • Building and adapting for the future • Networked and integrated services • Agile and innovative care • Responsive to community diversity 	
	Our People Make a Difference		A Leader In Research and Teaching
<ul style="list-style-type: none"> • Workforce for the future • Culture of respect and compassion • Employer of choice • Effective leadership and empowered staff 		<ul style="list-style-type: none"> • Delivering research innovation • Acknowledgement and recognition of research • Continuous education, teaching and training 	

Priority Developments for Paediatrics and Neonatology Clinical Stream 2018 - 2020

Priority Service Developments (include in priority order)	Linkage with Clinical Service Plans
1. Enhance capacity at Campbelltown and Liverpool Hospitals – <ul style="list-style-type: none"> ➢ Close Observation Beds and associated nursing workforce enhancements ➢ Increase in service capability in Campbelltown SCN from a level 3 to a 4 and associated nursing workforce enhancements ➢ Enhanced Paediatric medical staffing model implementation ➢ Neonatal NICU beds enhancement ➢ Allied Health workforce enhancements (across all disciplines) ➢ Campbelltown ED enhancement 	<ul style="list-style-type: none"> • Macarthur Clinical Service Plan • Enhanced Paediatric Capacity Plan to 2031
2. Transition Care Model implementation	<ul style="list-style-type: none"> • Transition Care Project, Apr-Sept 2018 • SWSLHD Health Improvement Plan for Children, Young People and Families 2016 - 2025
3. Weight Management Services plan implementation	<ul style="list-style-type: none"> • Growing Health Kids in SWSLHD
4. Further expansion to subspecialty clinics Campbelltown and Liverpool	<ul style="list-style-type: none"> • Macarthur Clinical Service Plan • Enhanced Paediatric Capacity Plan to 2031 • Transition Care Project • Liverpool Clinical Services Plan
5. Ambulatory Care models enhancements: <ul style="list-style-type: none"> ➢ PACS Unit Campbelltown extension of operating hours ➢ Fairfield to develop MoC (HITH) 	<ul style="list-style-type: none"> • Macarthur Clinical Service Plan • Enhanced Paediatric Capacity Plan to 2031 • SWSLHD Health Improvement Plan for Children, Young People and Families 2016 - 2025

Service Map – Paediatrics and Neonatology Clinical Stream – Future (2026)

		Paediatrics and Neonatology					
		Bankstown Hospital	Liverpool Hospital	Fairfield Hospital	Campbelltown/Camden Hospital	Bowral & District Hospital	Community Settings
Newborn Care	Neonatal Intensive Care		Neonatal ICU Level 5				
	Special Care Nursery	Special Care Nursery Level 3	Special Care Nursery Level 4	Special Care Nursery Level 3	Special Care Nursery Level 4	Special Care Nursery Level 2	
Paediatric Inpatient Services	Paediatric Inpatient Unit	Paediatric Inpatient Unit Level 4	Paediatric Inpatient Unit Level 4	Paediatric Inpatient Unit Level 4	Paediatric Inpatient Unit Level 5	Paediatric Inpatient Unit Level 3	
	Adolescent Inpatients		Adolescent Inpatients		Adolescent Inpatients		
	Paediatric Close Observation Unit		Paediatric Close Observation Unit		Paediatric Close Observation Unit		
	Eating Disorders Inpatients				Eating Disorders Inpatients		
	Diabetes Inpatients		Diabetes Inpatients		Diabetes Inpatients		
	Paediatric Elective General Surgery		Paediatric Elective General Surgery (>3 years)		Paediatric Elective General Surgery (>3 years)		
Paediatric Emergency General Surgery	Paediatric Emergency General Surgery – guided by facility policy						
Paediatric Elective Specialty Surgery	Paediatric Elective Specialty Surgery (>3 years)	Paediatric Elective Specialty Surgery (>3 years)	Paediatric Elective Specialty Surgery (>3 years)	Paediatric Elective Specialty Surgery (>3 years)	Paediatric Elective Specialty Surgery (>3 years)	Paediatric Elective Specialty Surgery (>3 years)	
Paediatric Emergency Specialty Surgery	Paediatric Emergency Specialty Surgery – guided by facility policy						
Paediatric Outpatient Clinics	General Paediatric Outpatient Clinics	General Paediatric Outpatient Clinics	General Paediatric Outpatient Clinics	General Paediatric Outpatient Clinics	General Paediatric Outpatient Clinics	General Paediatric Outpatient Clinics	
	Paediatric General Surgery Outpatient Clinics		Paediatric General Surgery Outpatient Clinics		Paediatric General Surgery Outpatient Clinics		
	Diabetes and Endocrinology Outpatient Clinics		Diabetes and Endocrinology Outpatient Clinics		Diabetes and Endocrinology Outpatient Clinics		
	Neurology Outpatient Clinics		Neurology Outpatient Clinics		Neurology Outpatient Clinics		
	Immunology Outpatient Clinics		Immunology Outpatient Clinics		Immunology Outpatient Clinics		
	Renal Outpatient Clinics				Renal Outpatient Clinics		
	Rheumatology Outpatient Clinics		Rheumatology Outpatient Clinics		Rheumatology Outpatient Clinics		
	Dermatology Outpatient Clinics		Dermatology Access to Consult		Dermatology Outpatient Clinics		
	Gastroenterology Outpatient Clinics		Gastroenterology Outpatient Clinics		Gastroenterology Outpatient Clinics		
	Cardiology Outpatient Clinics				Cardiology Outpatient Clinics		
	Respiratory Outpatient Clinics				Respiratory Outpatient Clinics		
	Weight Management		Secondary MDT Intervention Clinics		Secondary and Tertiary MDT Intervention Clinics		Primary Intervention Clinics
	Ophthalmology Outpatient Clinic		Ophthalmology Outpatient Clinic		Ophthalmology Outpatient Clinic		
	Orthopaedic Outpatient Clinic				Orthopaedic Outpatient Clinic		

Paediatrics and Neonatology								
		Bankstown Hospital	Liverpool Hospital	Fairfield Hospital	Campbelltown/Camden Hospital	Bowral & District Hospital	Community Settings	
Paediatric Ambulatory Care Services	Paediatric Hospital in the Home (HITH)	Paediatric HITH	Paediatric HITH	Paediatric HITH	Paediatric HITH			
	Paediatric Short Stay Unit	Paediatric SSU	Paediatric SSU	Paediatric SSU	Paediatric SSU	Paediatric SSU		
	Paediatric Acute Review Clinics	Paediatric Acute Review Clinic	Paediatric Acute Review Clinic	Paediatric Acute Review Clinic	Paediatric Acute Review Clinic	Paediatric Acute Review Clinic		
	Paediatric Ambulatory Care Outreach	Paediatric Ambulatory Care Outreach	Paediatric Ambulatory Care Outreach	Paediatric Ambulatory Care Outreach	Paediatric Ambulatory Care Outreach			
	Paediatric Sleep Unit		Paediatric Sleep Unit		Paediatric Sleep Unit			
Community Paediatrics Services	Developmental Assessment	Developmental Assessment – adjacent to or on hospital campus						
	Child Protection	Child Protection Acute Services						★
	Vulnerable Children's Clinics	Vulnerable Children's Clinics						★
Paediatric Allied Health	Speech Pathology	Type and breadth of services depends on site. Some sites have dedicated paediatric allied health and other sites provide services within the general role.						
	Social Work	Type and breadth of services depends on site. Some sites have dedicated paediatric allied health and other sites provide services within the general role.						
	Physiotherapy	Type and breadth of services depends on site. Some sites have dedicated paediatric allied health and other sites provide services within the general role.						
	Occupational Therapy	Type and breadth of services depends on site. Some sites have dedicated paediatric allied health and other sites provide services within the general role.						
	Dietetics	Type and breadth of services depends on site. Some sites have dedicated paediatric allied health and other sites provide services within the general role.						
	Feeding Clinics		Feeding Clinics		Feeding Clinics			

